

Forest stands structure classification using LiDAR and aerial photography

human vs computer

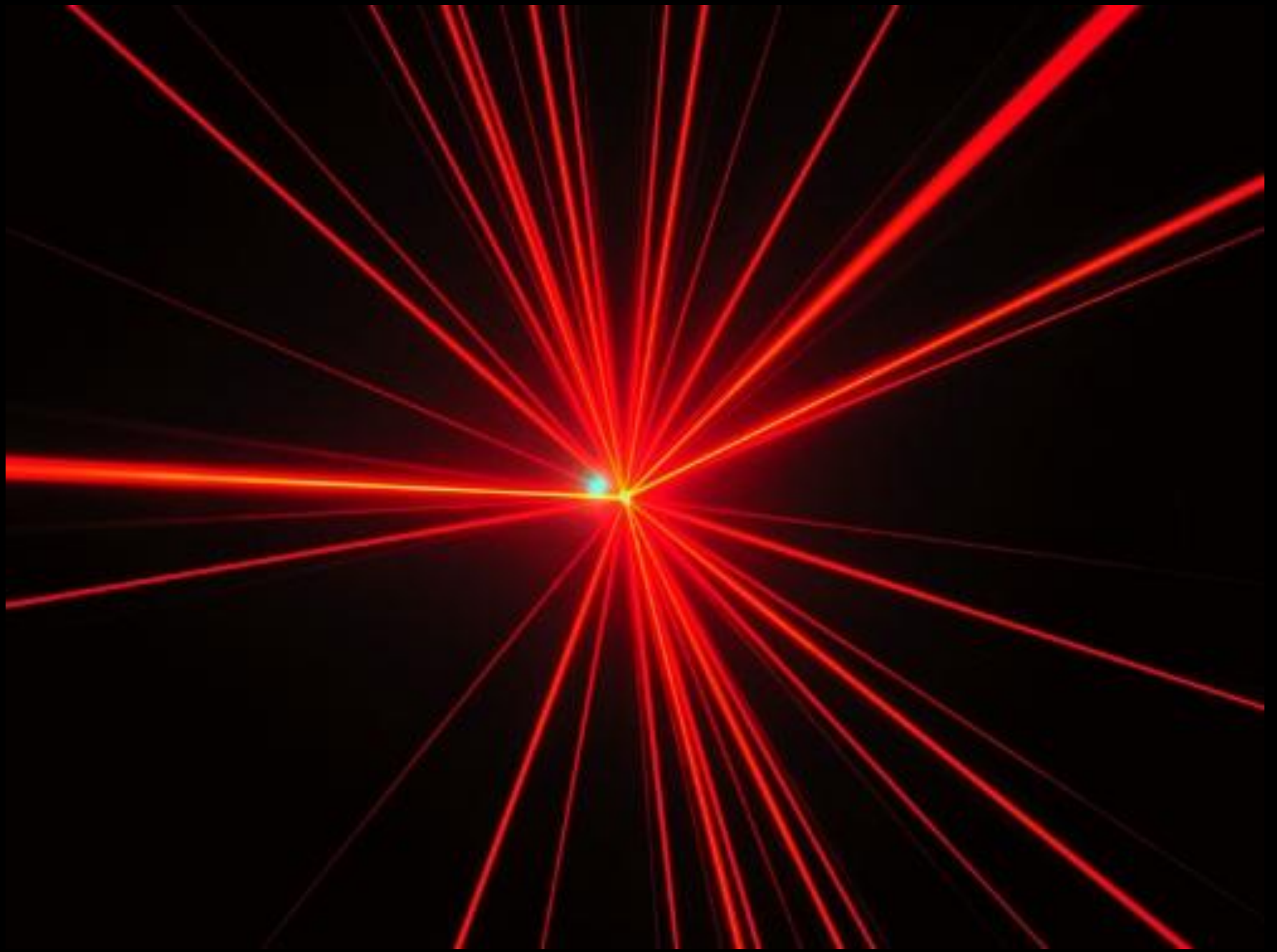
Situation

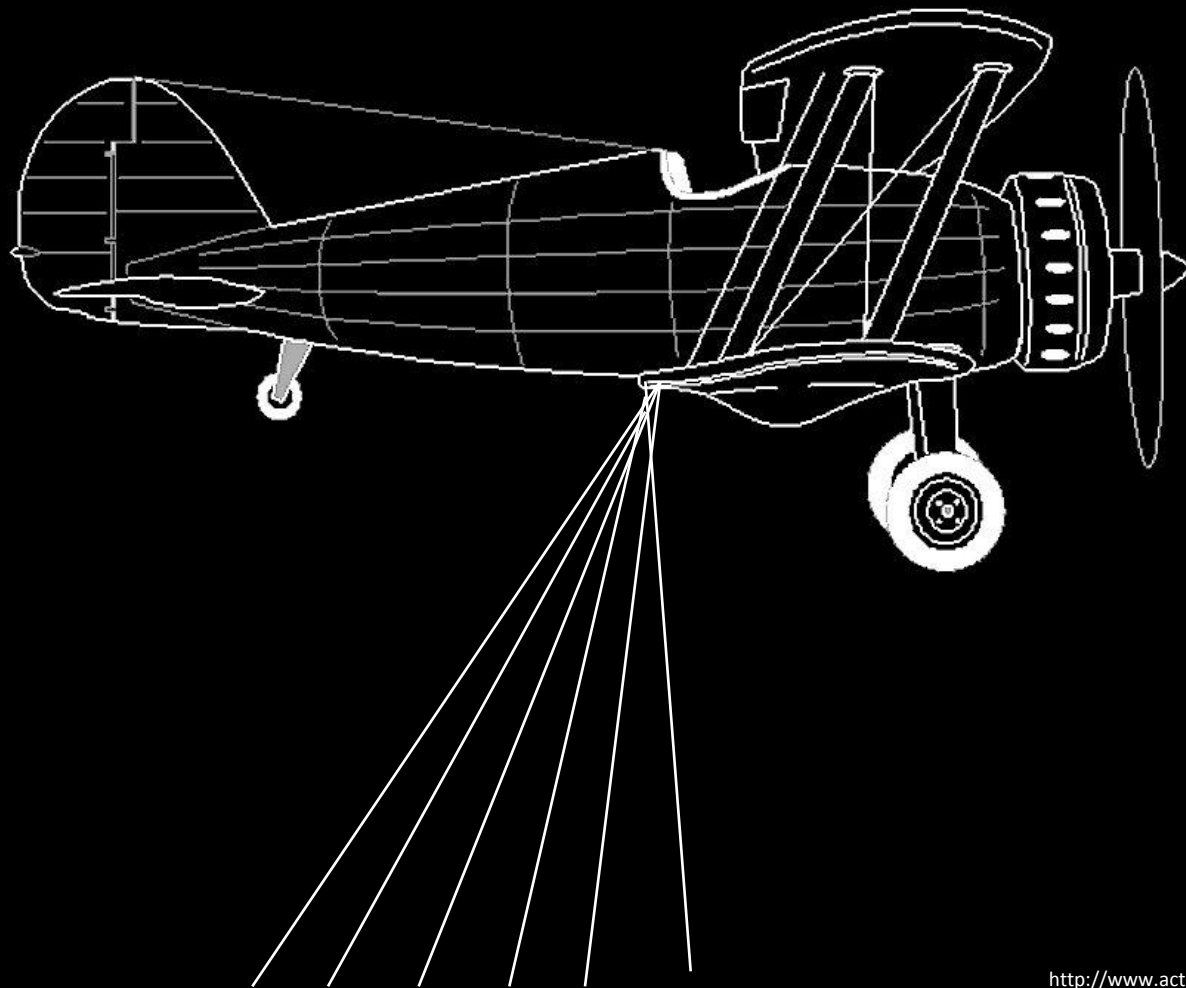
- Need to increase information and its quality
- Large territory
- Few photo-interpreters
- New technology (LiDAR)
- Computerize mapping ?
- Prospective work

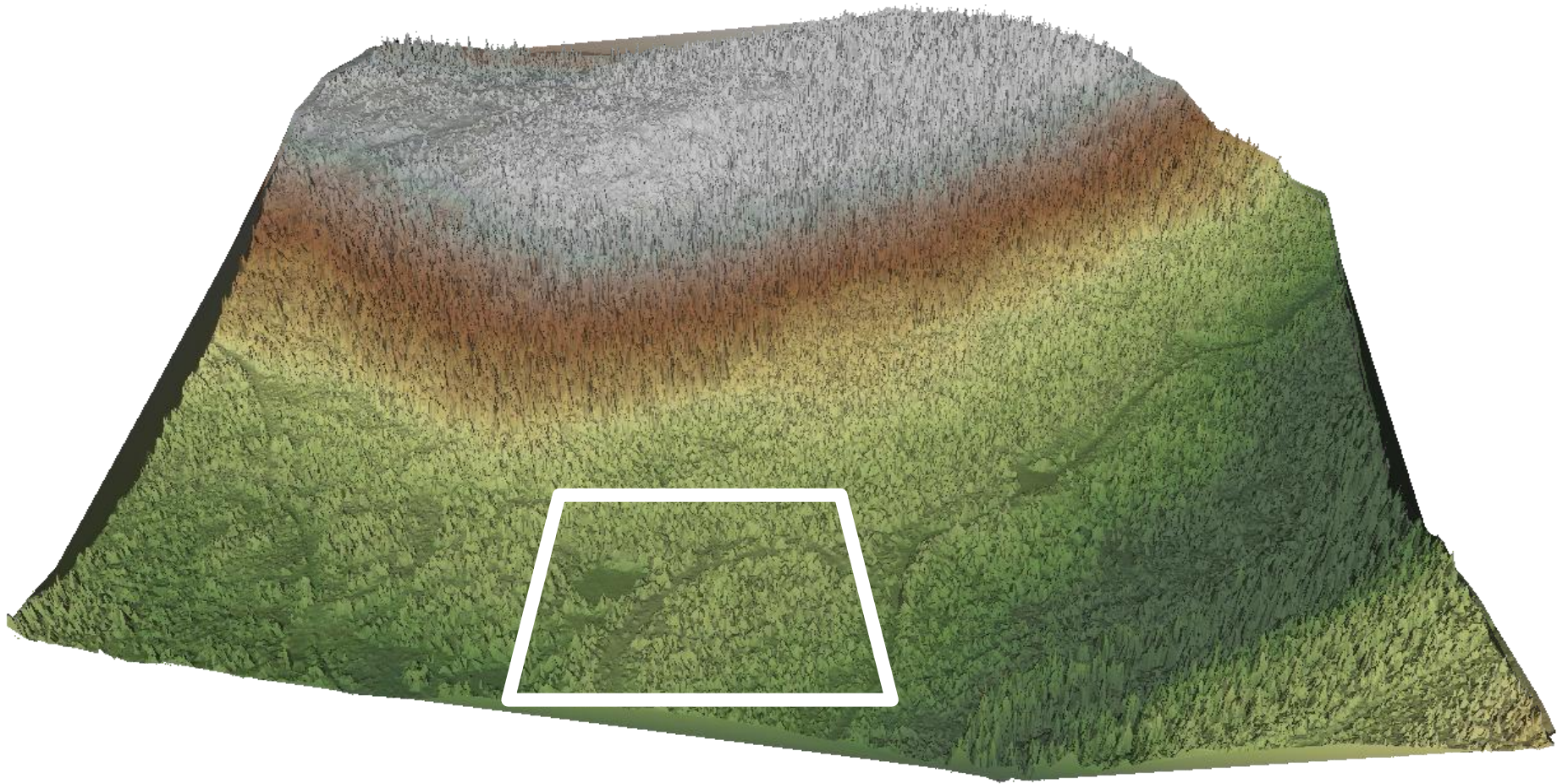
Method

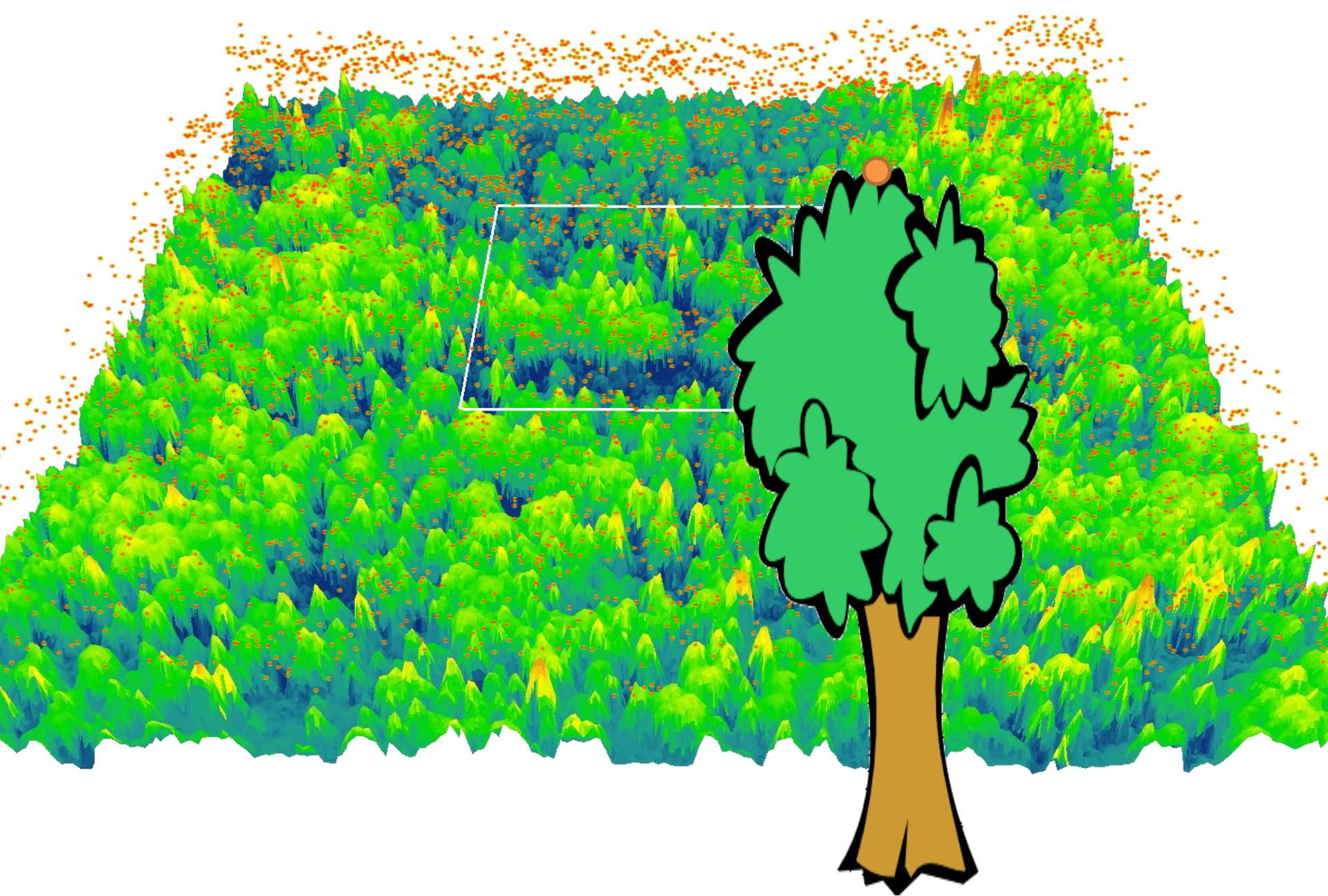


Matane

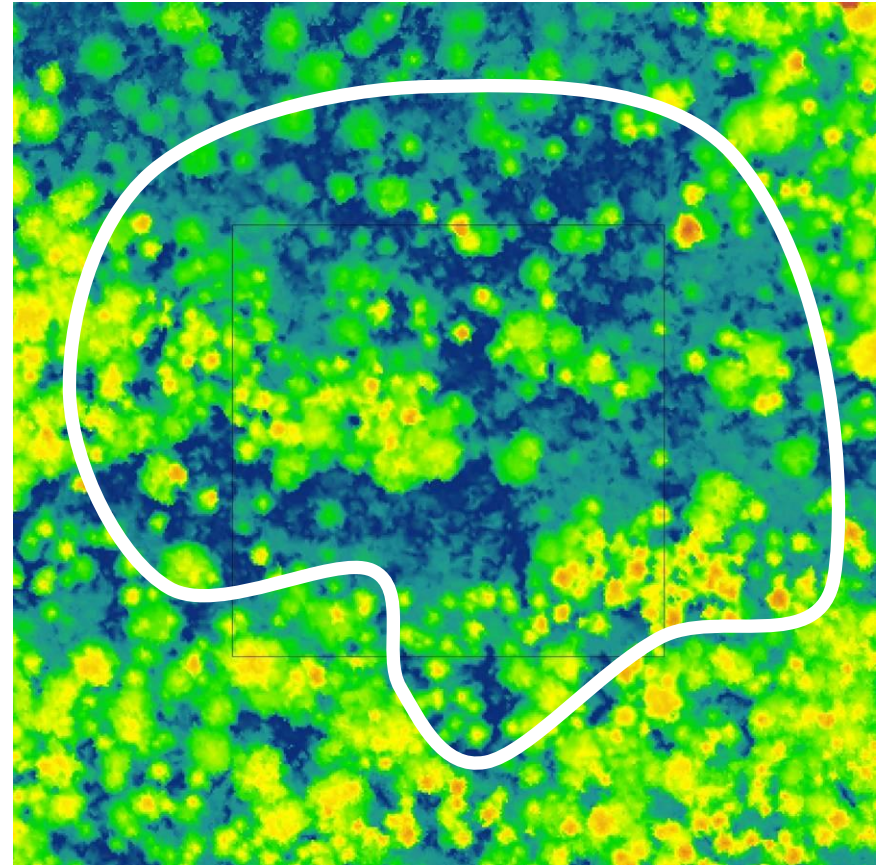
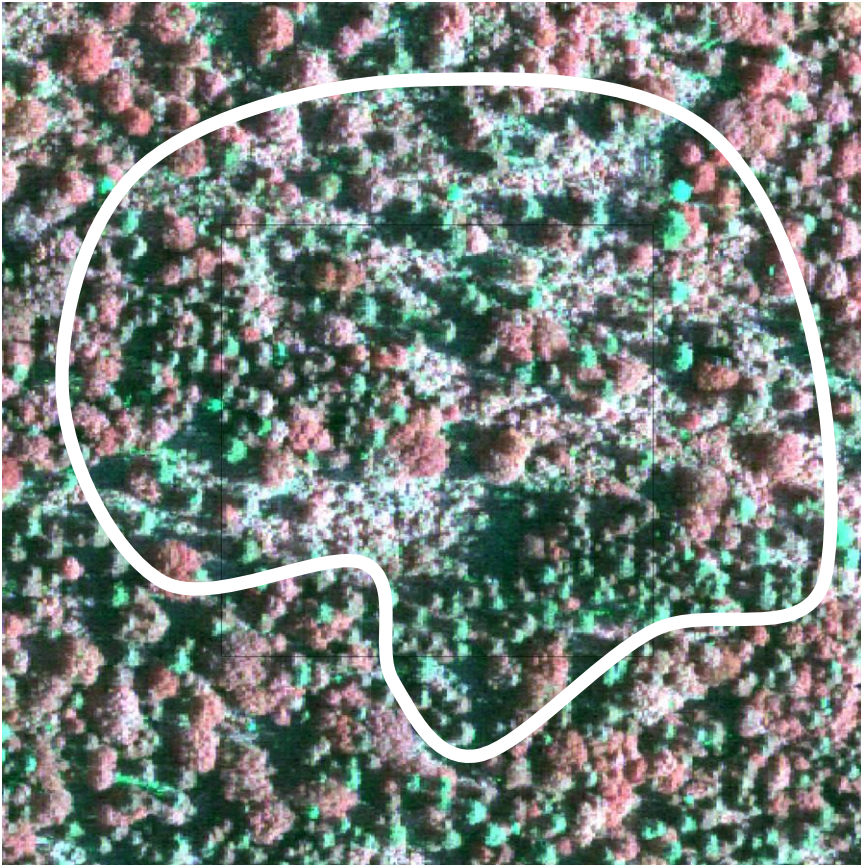








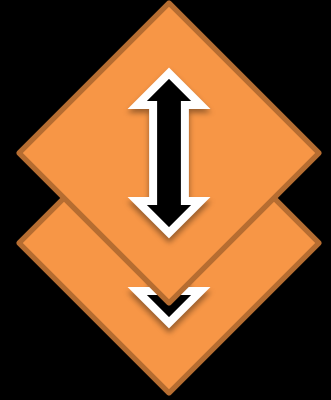
Comparison





Vertical structure

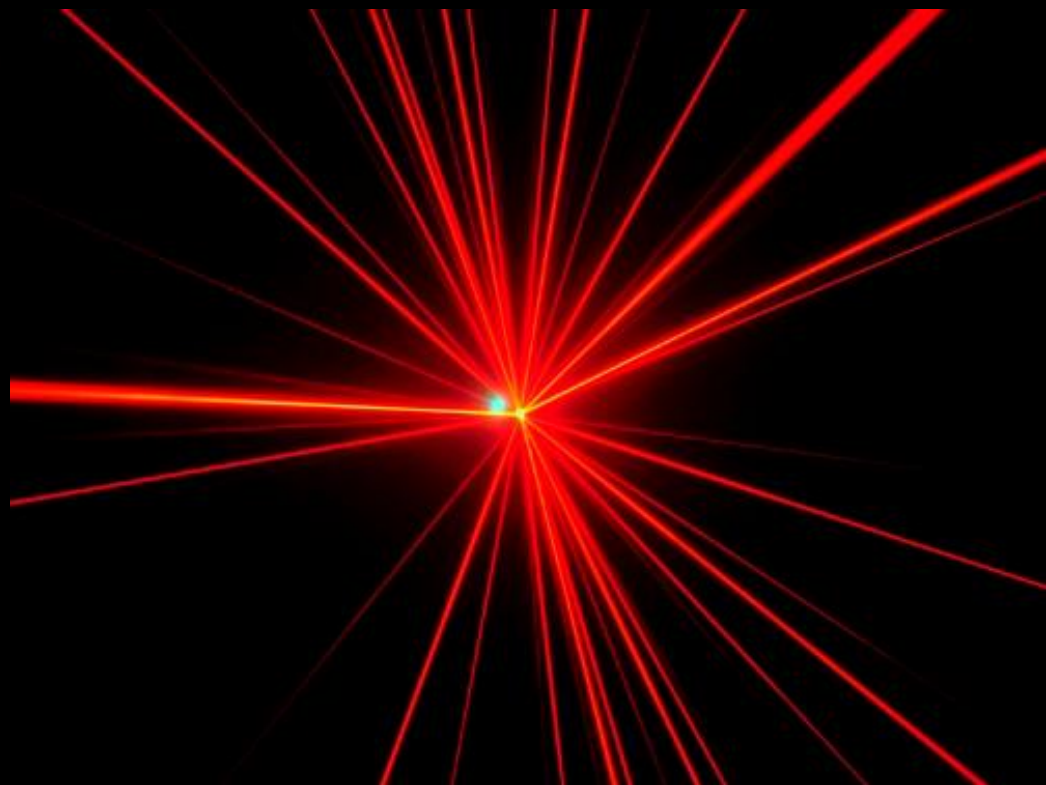
Height

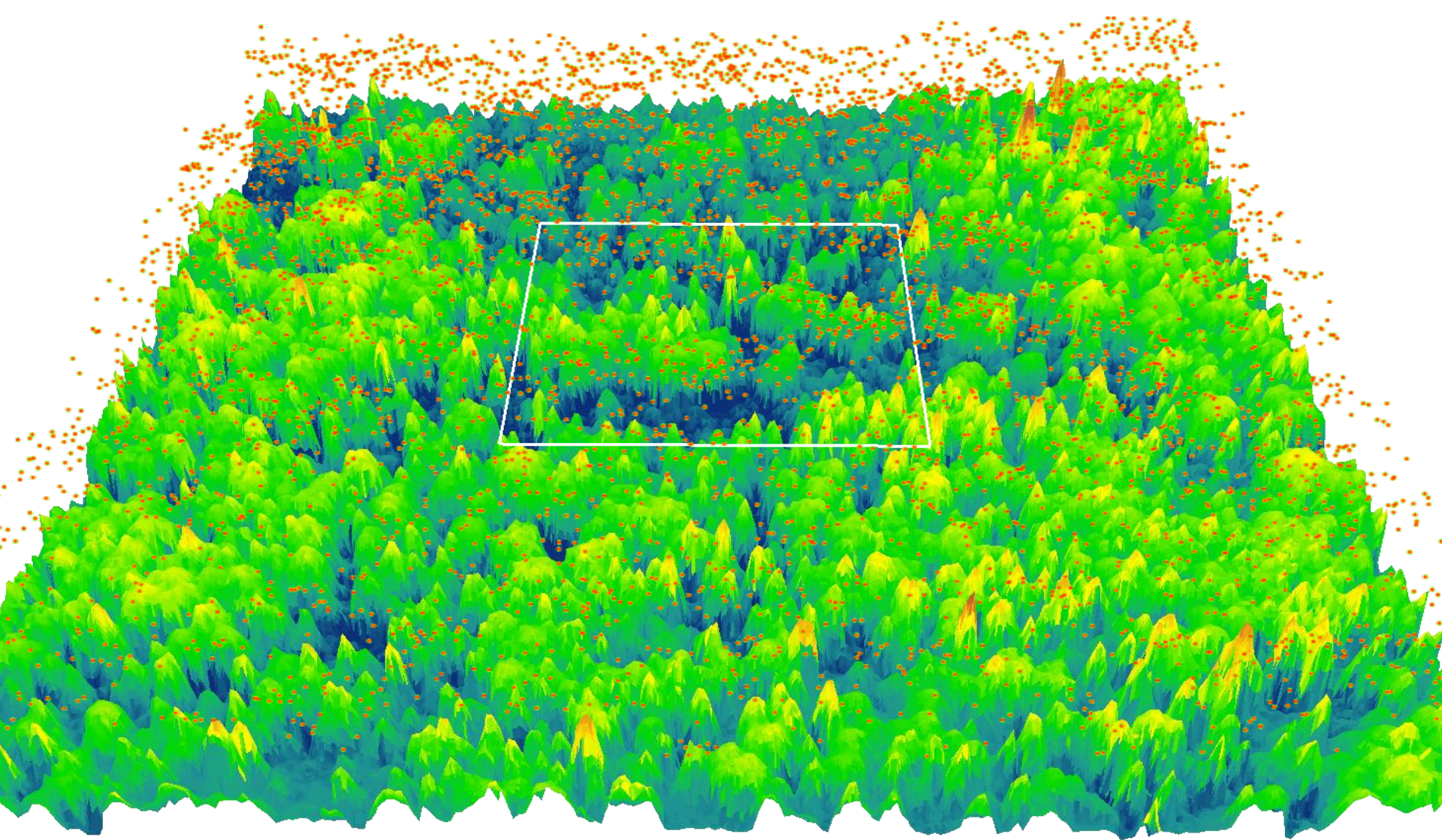


Horizontale structure

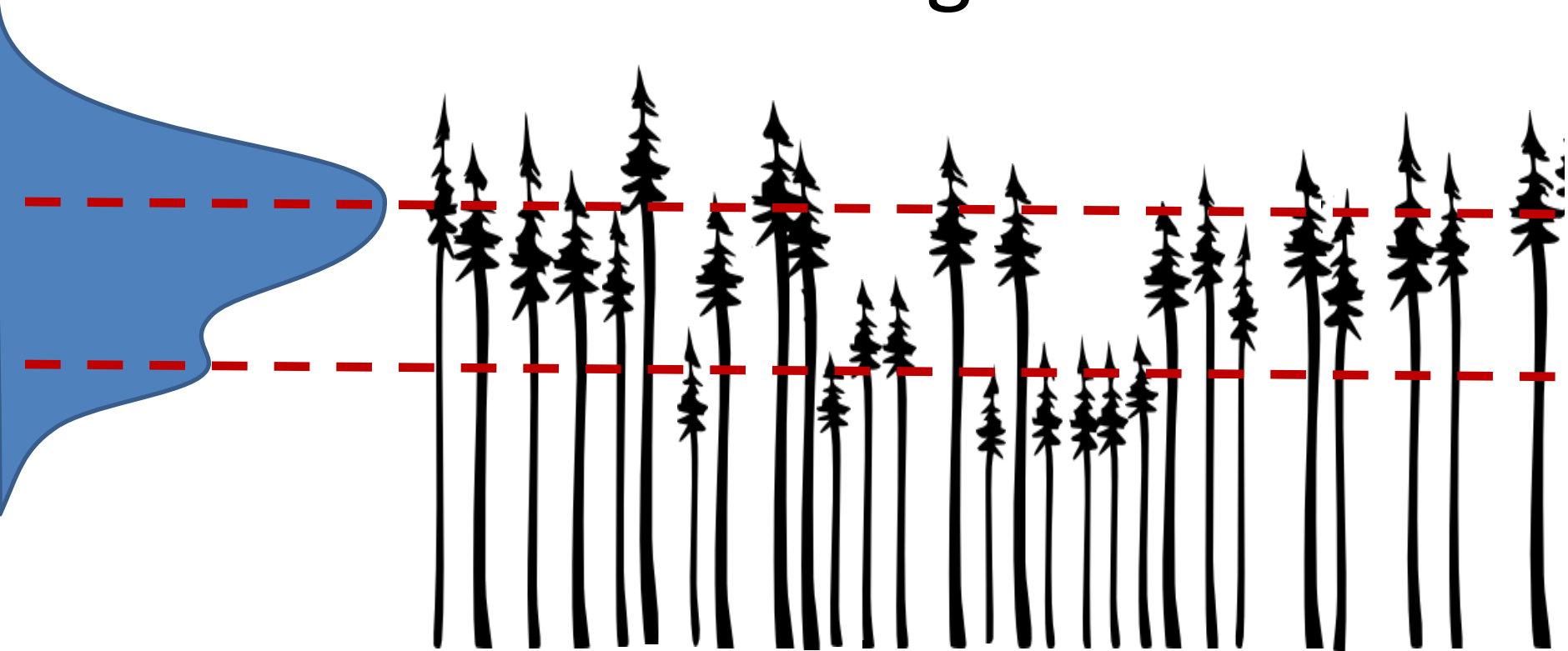
Gaps

Mesuring stand height with LiDAR



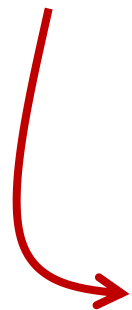


Stand Height

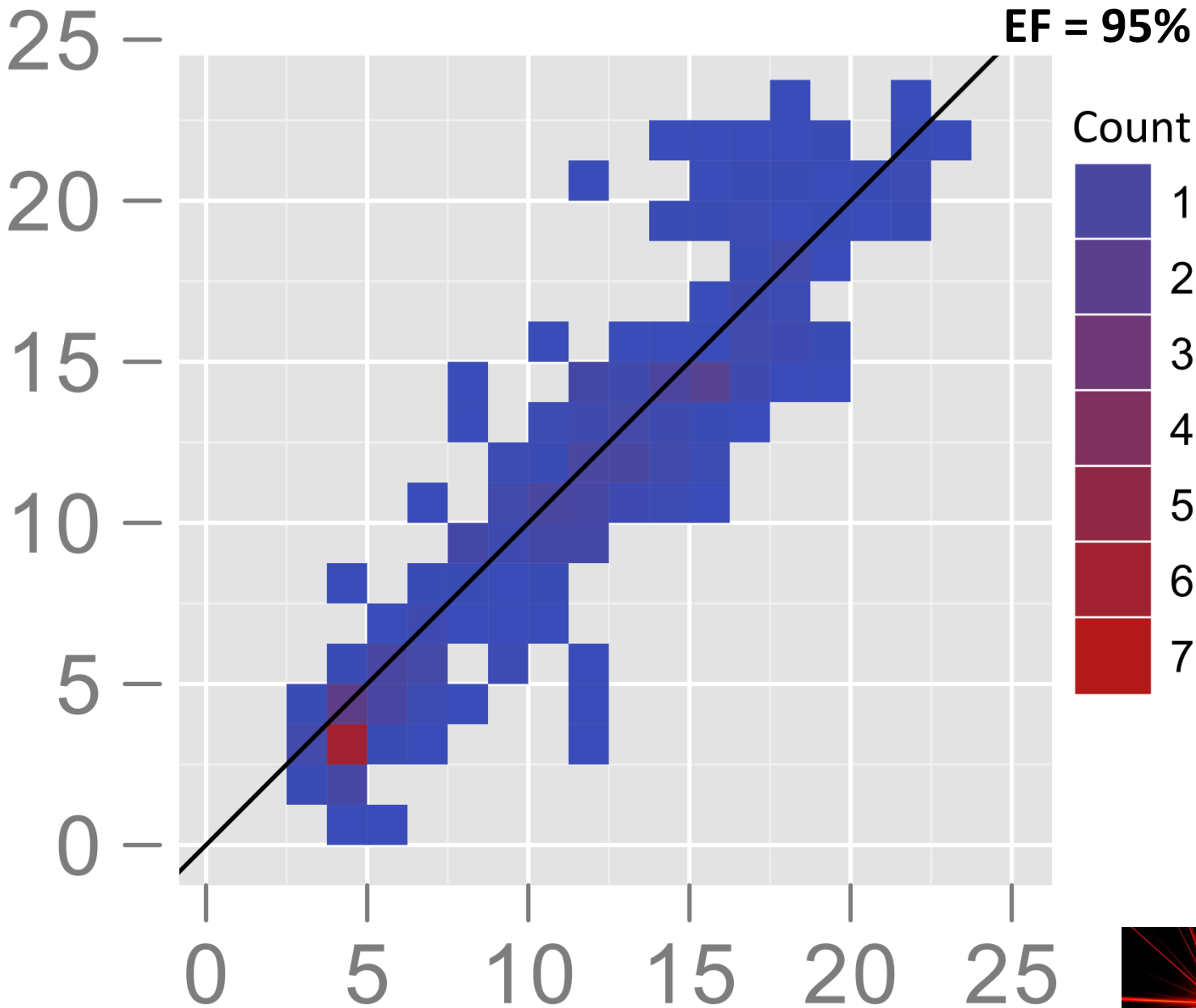


Results

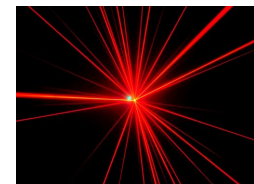
Height comparison



Observed height

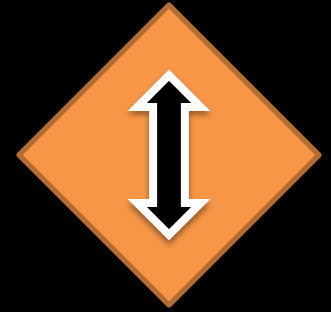


Computer interpreted height



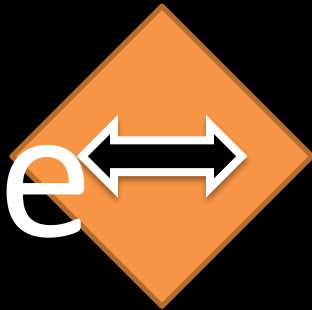
Vertical structure

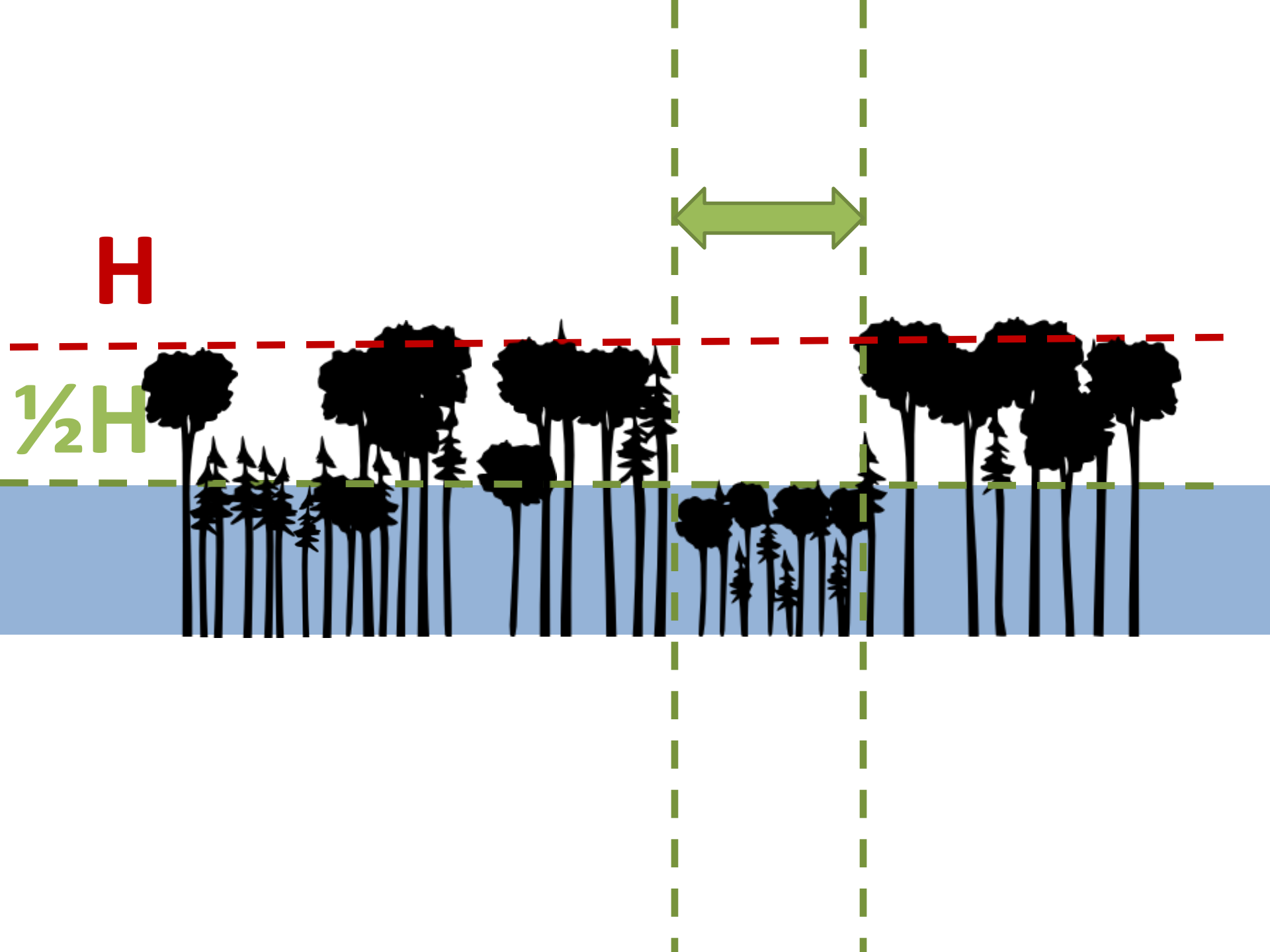
Height

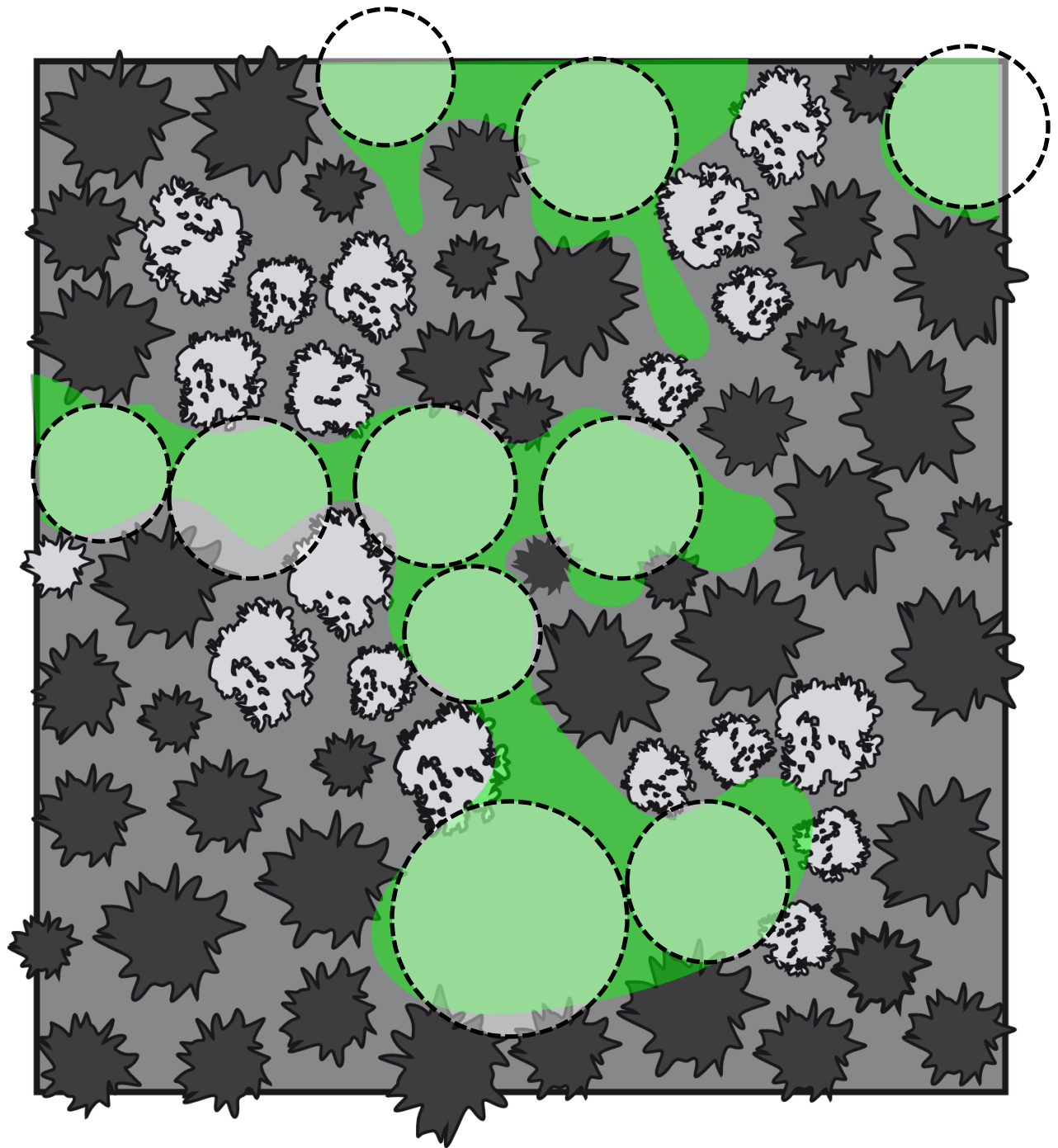


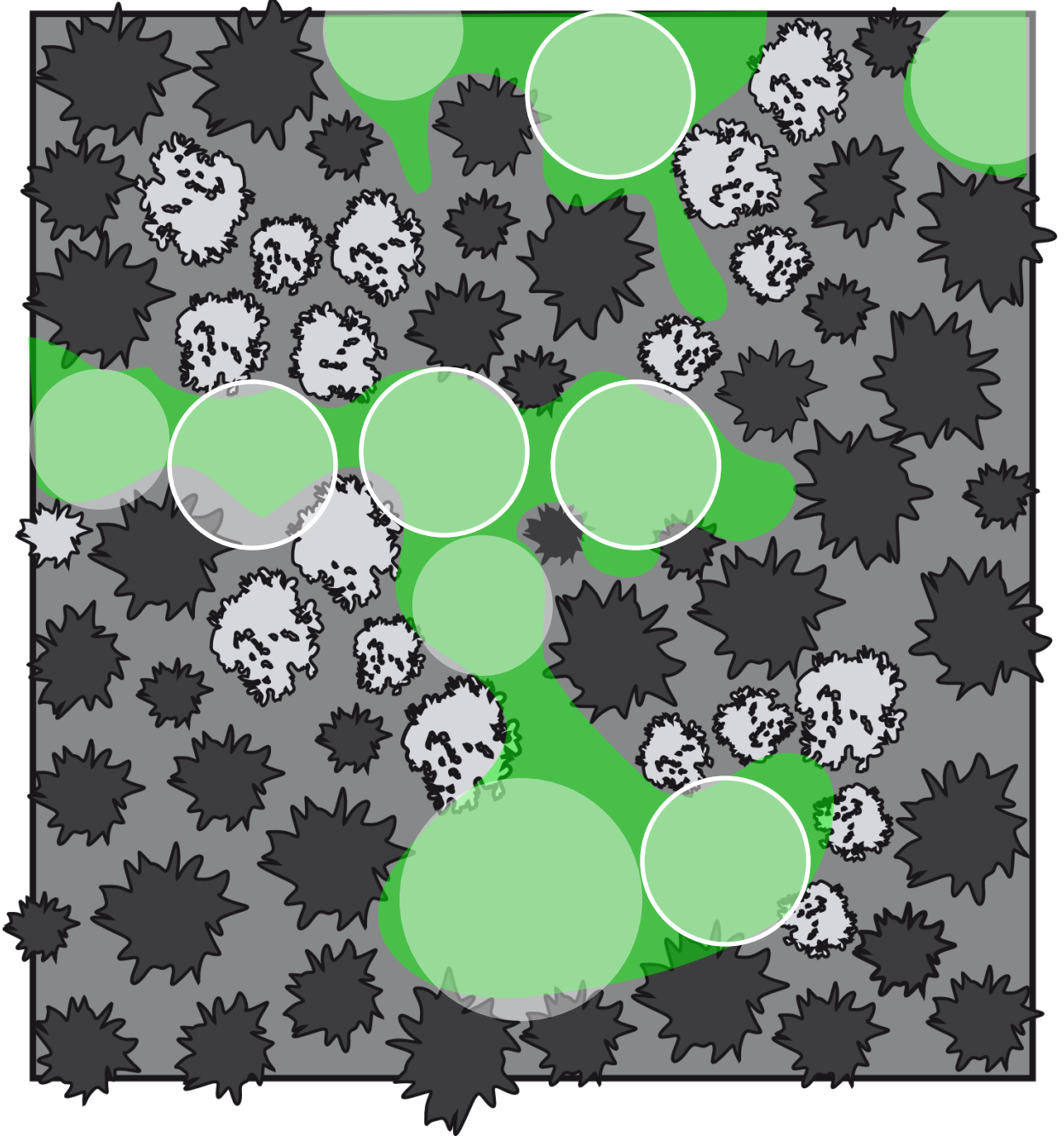
Horizontale structure

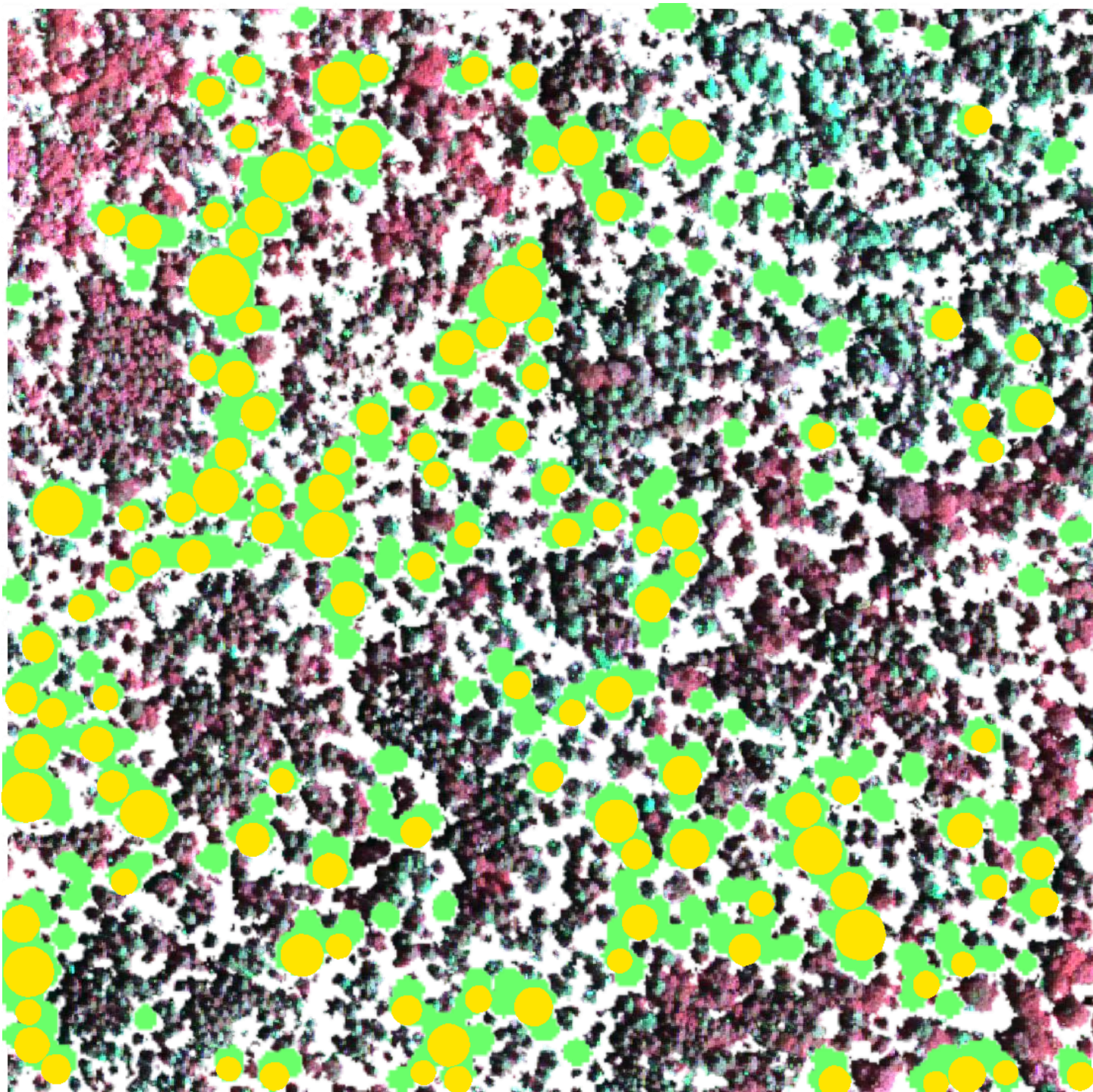
Gaps





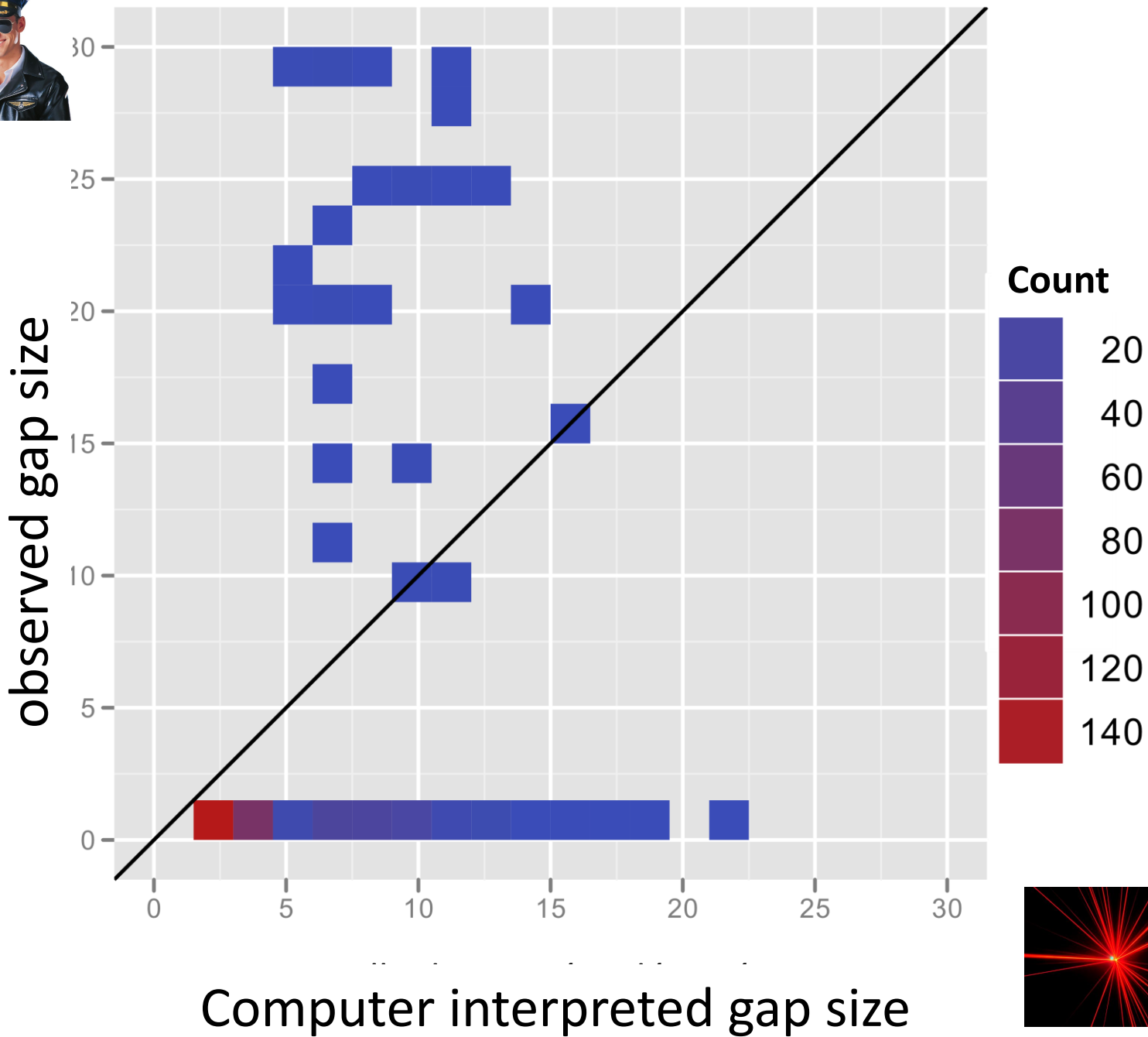






Results

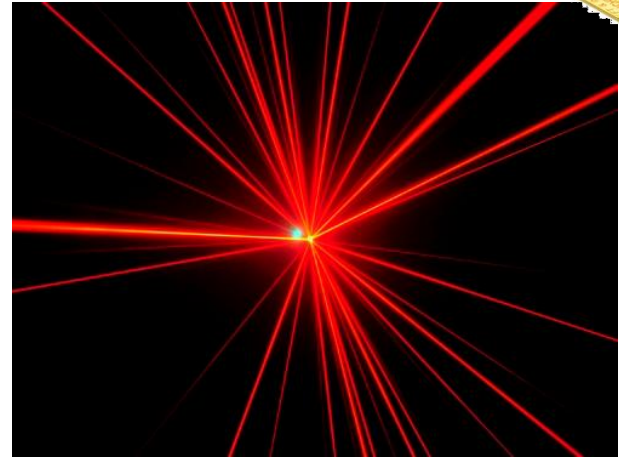
Gaps

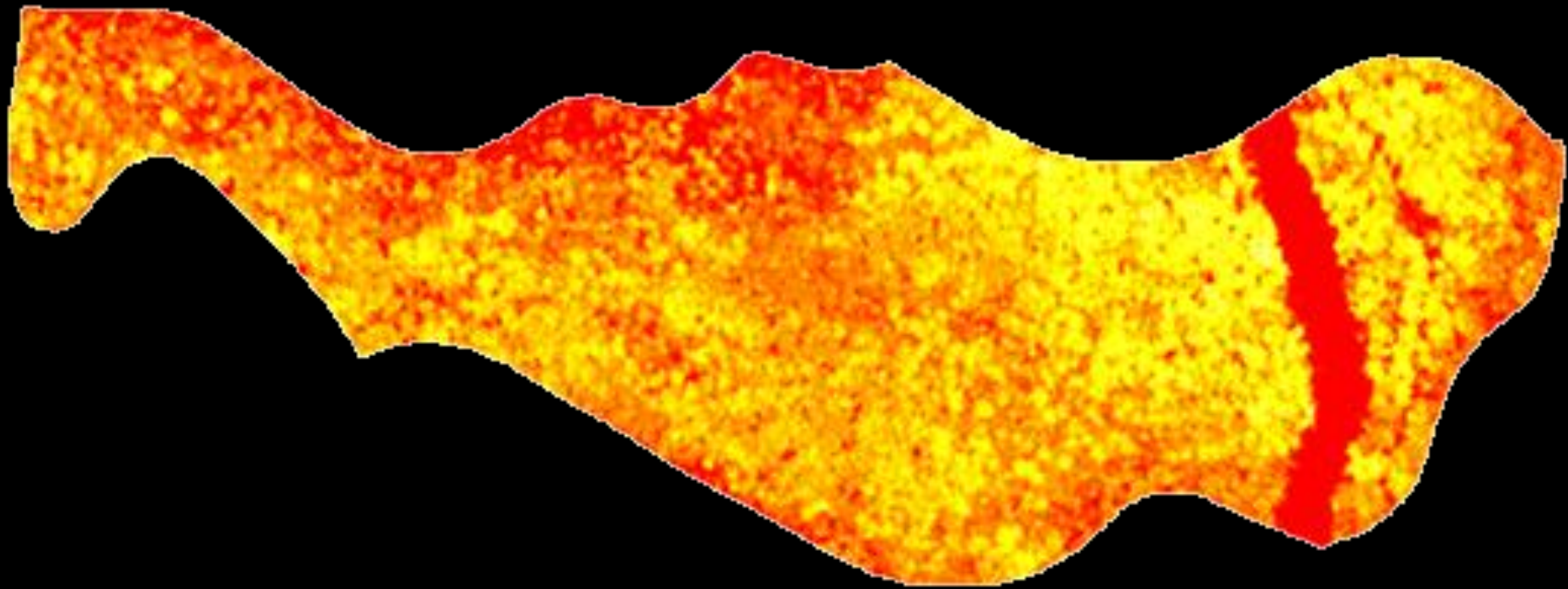


1. Conclusion



2. Conclusion





Etienne Bellemare Racine, etiennebr@gmail.com

Jean Bégin

Benoît St-Onge